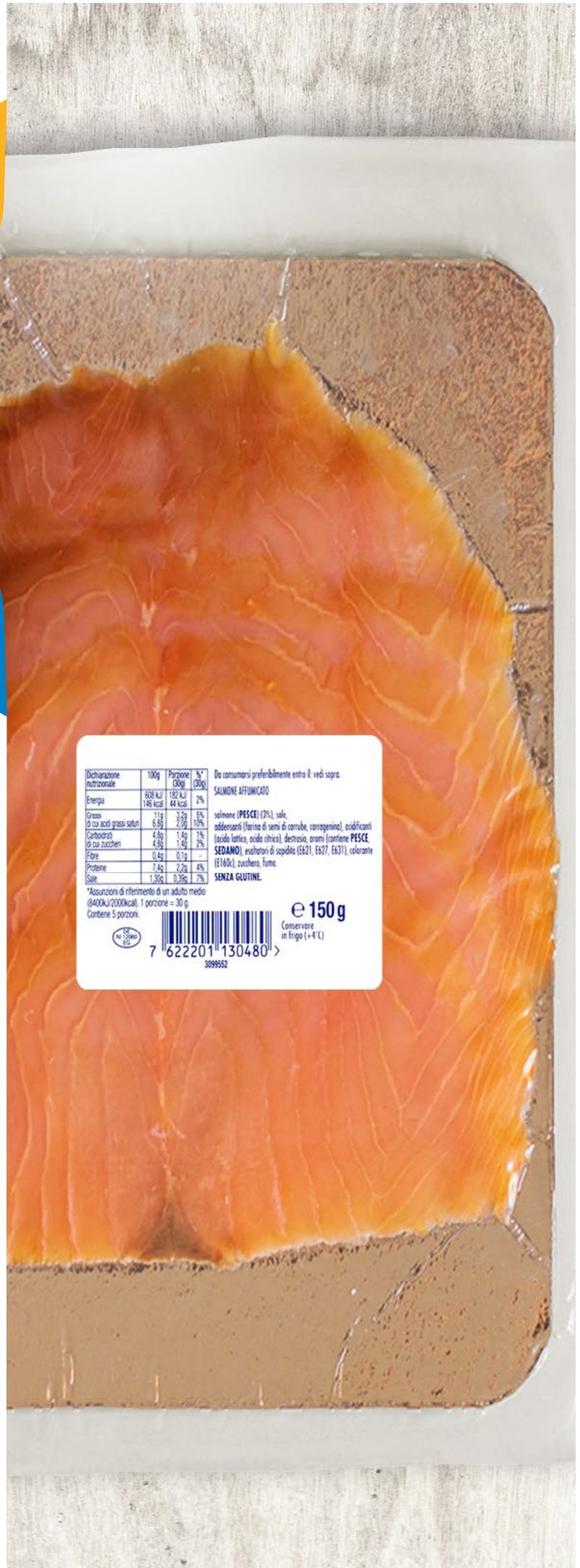




etipack
FOOD

TECHNEWS

LABELING AND DISTRIBUTION OF VACUUM-PACKED FOOD PRODUCTS



Dichiarazione nutrizionale	100g	Porzione (30g)	% (30g)
Energia	608 kJ 146 kcal	182 kJ 44 kcal	2%
Grassi di cui acidi grassi saturi	11g 6,5g	3,3g 2,0g	5% 10%
Carboidrati di cui zuccheri	4,8g 4,8g	1,4g 1,4g	3% 2%
Fibra	0,4g	0,1g	—
Proteine	7,4g	2,2g	4%
Sale	1,30g	0,39g	7%

Da consumarsi preferibilmente entro il vedi sopra.

SALMONE AFFUMICATO

salmone (PESCE) (3%), sale, addensanti (farina di semi di carrube, carrageenina), acidificanti (acido lattico, acido citrico), destrosio, aromi (contiene PESCE SEDANO), esaltatori di sapidità (E621, E627, E631), colorante (E160c), zucchero, fumo.

SENZA GLUTINE.

*Assunzioni di riferimento di un adulto medio (8400kJ/2000kcal), 1 porzione = 30 g
Contiene 5 porzioni.

 **e 150g**
Conservare in frigo (+4°C)

7 622201 130480 >
309952

Customized labeling system, for distribution and application of labels on the upper side of products, with variable data control and non-compliance management.



In partnership with
Emilabel - emilabel.com

THE CLIENT

Italian company specialized in the processing and distribution of smoked, marinated and flavored salmon and other smoked fish varieties.



THE CHALLENGE

Distribute, handle and label products with guaranteed accurate control of overprinted variable data and rejection of non-compliant packages.

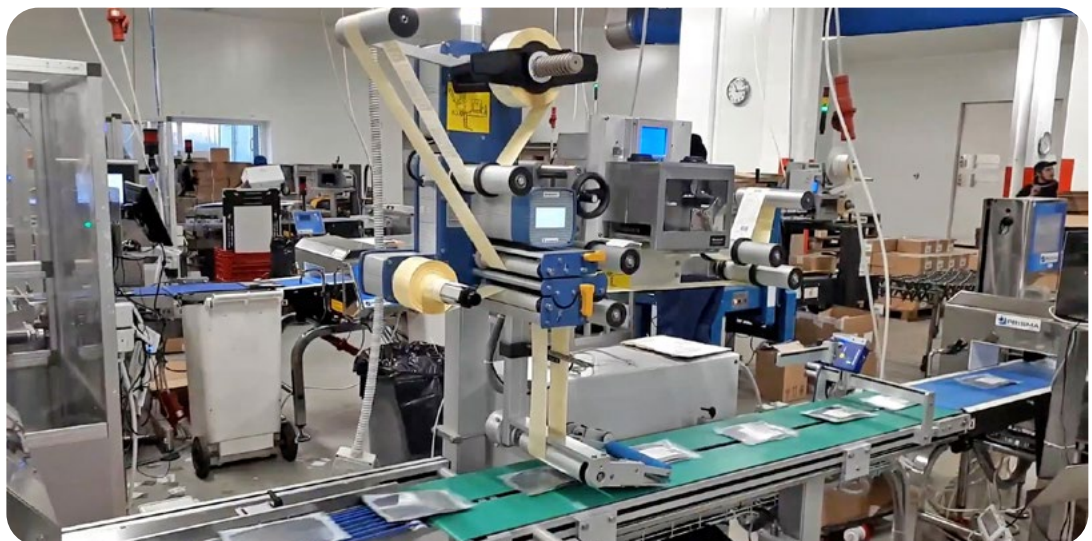
The client was in search of a system to manage the labelling of vacuum-sealed plastic bags of smoked salmon with maximum precision and control. With regard to handling, the system had to make it possible to effectively and quickly optimize the loading and transport of as many packages as possible. As for data management, the need was to achieve maximum

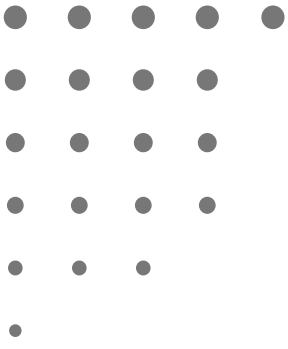
autonomy and flexibility on the one hand, in designing the label, and on the other, in the entry, printing, management and control of variable data. Finally, the system had to allow the correct identification of mislabeled products, therefore not conforming, in order to allow their exclusion from the process.

THE SOLUTION

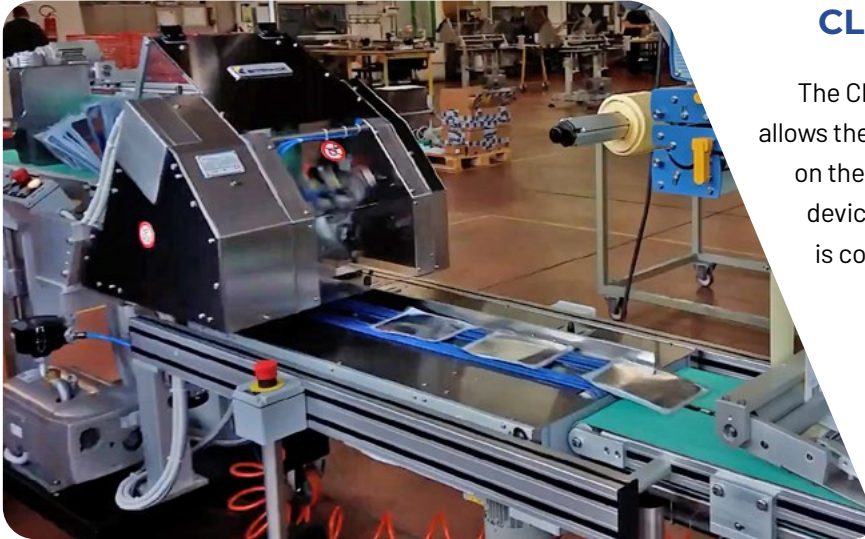
System 9 special for top labelling, complete with pick&place with loading system, barcode control, non-conformity management, and variable batch count.

To achieve the required results, Etipack has designed a system consisting of five sections: feeding, labelling, printing and data control, product counting. Product distribution is carried out thanks to an automatic Clippy Big pick and place device, complete with a high autonomy double belt loading storage system. The application of self-adhesive labels on the upper surface of the packages is conducted with an Energy 200 automatic labelling machine with a distribution speed of up to 50 m/min. Thanks to a customized control panel, the client can manage the coding and printing of variable data. In case of non-compliance, the system block is activated, allowing the removal of non-compliant products. A batch collection and management device is installed at the system output.





[WATCH VIDEO](#)



CLIPPY BIG PICK & PLACE

The Clippy Big automatic pick&place device allows the product to be positioned horizontally on the conveyor belt thanks to a suction cup device. Equipped with a brushless motor, it is complete with a high-autonomy double-belt loading magazine allowing the control of: product progress towards the fiber optic photocell equipped gripping point, minimum load and empty storage unit.



SUPPORTING STRUCTURE

It allows to sustain belts and is composed of two groups of brackets, supporting columns with independent vertical micro-adjustments, and a base equipped with wheels.



CUSTOM MANAGEMENT INTERFACE

Electrical panel with integrated PLC INDUSTRY 4.0 ready, it allows the management of the system the labelling process, the Barcode control and the collection of the packages at the end of the line.



ALIGNMENT SYSTEM

Height adjustable and placed alongside to the conveyor belt, it allows to deposit even manually packaged products.

ENERGY 200 LABELING MACHINE

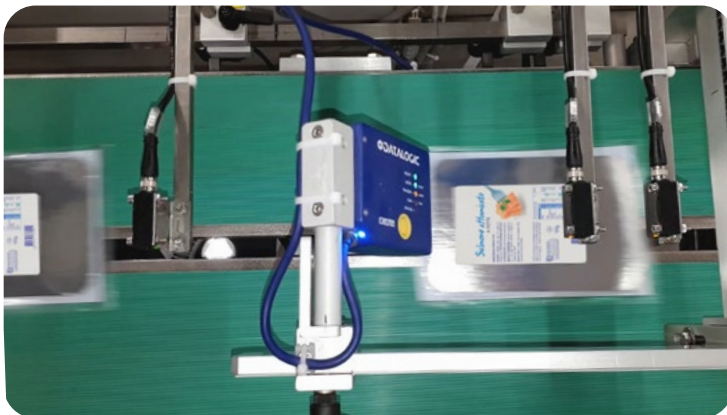
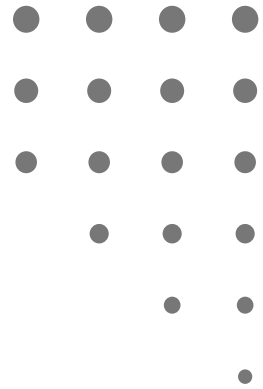
Equipped with stepper motor motorization, it allows to reach a distribution speed up to 50 m/min.

Thanks to the integrated touch screen display, it enables the setting of more than 50 operating parameters.



COUPLED PULLING UNIT

It allows to strengthen the support during ribbon sliding and to stabilize the label reel pulling with a maximum width of 200 mm.



CHECKING AND COUNTING

A Barcode reader with supports, allows the control of the label presence on the product. In case of non-compliant product, the system stops to enable the removal of the package. The photocell module counts the correctly labelled bags.

BATCH PICKING AND MANAGEMENT

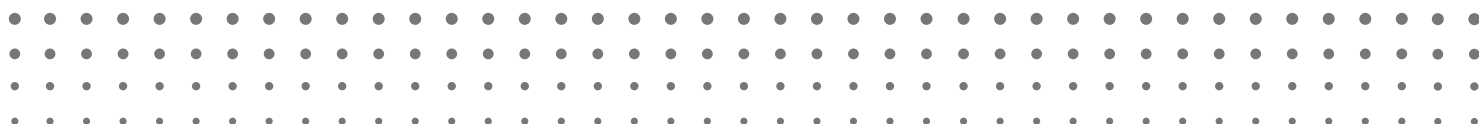
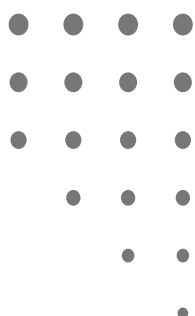
A product collection system placed at the end of the line, equipped with bag overlap control and variable counting with acceleration at the end of the count, allows the labelled packages to be sorted into batches.



RESULTS

High flexibility in formats management as well as feeding modes, with maximum accuracy and labeling control.

The dedicated labelling system, for the distribution and application of labels on the upper side of smoked salmon packages, allows the customer to manage with maximum flexibility, precision and autonomy the labelling of 3 label formats: 175, 135 and 130 mm, with a high level of reliability thanks to the several control systems for variable data and non-compliance. Thanks to the integration of the customized support structure for the Clippy Big pick-and-place device, the client can also choose to manage the packaging process in manual mode involving an operator for loading the products to be labeled.



ABOUT ETIPACK

Etipack SpA designs, manufactures and sells industrial systems for labelling and coding with self-adhesive labels, feeders and pick and place machines for product distribution and handling. Since 1978 a leading company in its sector in Italy, and one of the largest in Europe, Etipack is today an international group consisting of subsidiaries and affiliates.

 etipack.it/en

 marketing@etipack.it