



TECHNEWS

MULTIPLE LABELING SYSTEM FOR ELLIPTICAL BOTTLES OF NAIL POLISH



Multiple labeling system for the application of 3 labels on elliptical bottles containing nail polish.



In collaboration with
Massimo Ferrari

THE CUSTOMER

Italian company in the
cosmetics and beauty industry
specialized in the production of
nail polish.



THE SOLUTION

**Special System 5/3 Active
to apply labels on top, front
and back of nail polish
bottles.**

The customer was looking for a system to apply labels on elliptical nail polish bottles. Due to the small size of the glass bottles, the challenge was to work with relatively small labels that require a high level of precision in application. To achieve this goal, Etipack designed a Special System 5/3 Active capable of coordinating all the moving parts of the machine to apply 3 labels, two of which at the same time, to the single passage of each product.





PLAY

[WATCH THE VIDEO](#)



3500
pcs/h

Production capacity

CHAIN DISTANCING/ORIENTING DEVICE

It is thanks to this device that the products are oriented, spaced and arranged for a correct front/back application. It is also able to condition the bottles laterally by making a lateral seal during application on the top, thus ensuring that the products always remain perfectly stable.



LATERAL LABELERS FRONT AND BACK

The first side labeller is designed to overprint variable data on the label by means of a Datamax thermal transfer printing engine (mod. A 4310). The second side labeller is mechanically prearranged to house a "hot" printing unit in the future.



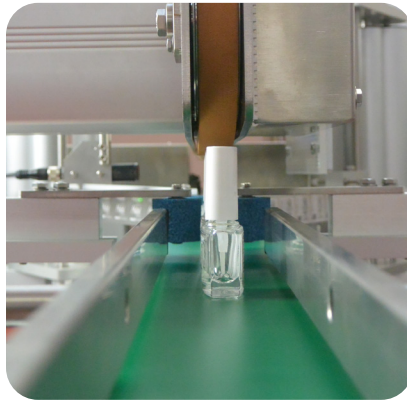
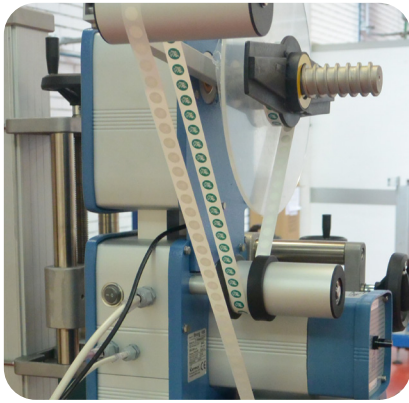
REFLEX PHOTOCELL

It detects the passage of the product and activates the distribution of the label, its positioning is particular and allows the possibility to adjust it manually.

CONTROL PANEL

Operator panel with display, emergency button and multifunction button.



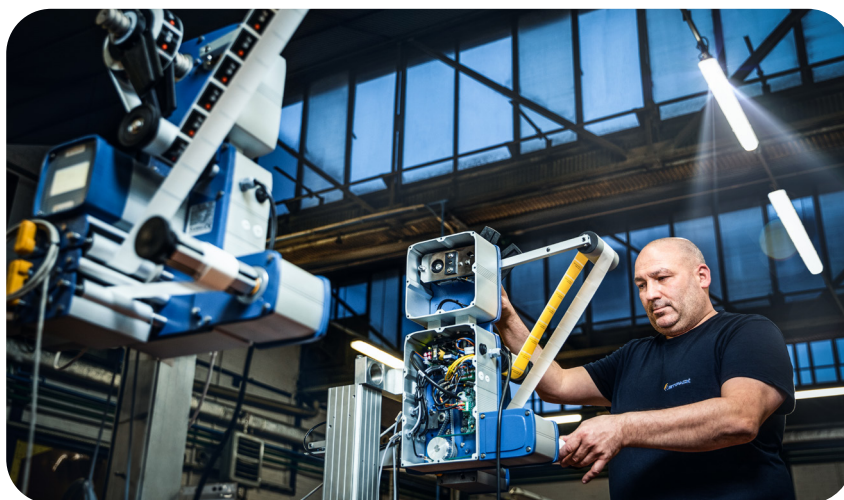


PRECISION OF APPLICATION

The peculiarity of the machine is that it is a coordinated, precision system. Since it has to work on relatively small products and labels, the precision of application is obtained by the coordination of the moving parts of the machine (the conveyor belt, the orienter and spacer, the upper stabilizing device) and by a suitably positioned start photocell that senses the presence of the product.



All this allows a production of about 3500 pieces per hour guaranteeing the application tolerance required by the market.



ABOUT ETIPACK

Etipack SpA designs, manufactures and sells industrial systems for labelling and coding with self-adhesive labels, feeders and pick and place machines for product distribution and handling. Since 1978 a leading company in its sector in Italy, and one of the largest in Europe, Etipack is today an international group consisting of subsidiaries and affiliates.



etipack.it



marketing@etipack.it