



# We build machines and strong relationships

Product Portfolio



Via Aquileia, 55/61 20092  
Cinisello Balsamo (MI) Italia



+ 39 02 660621 [etimapack@etipack.it](mailto:etimapack@etipack.it)  
[www.etipack.it/en](http://www.etipack.it/en)



**Member of Possehl Identification Solutions**  
[www.possehl-identification.com](http://www.possehl-identification.com)



# COMPANY

## Numbers that matter

Etipack since 1978 designs, manufactures and sells, systems for **labelling and coding with self-adhesive labels, dispensers and pick & place devices** for products distribution and handling.

Industry leader in Italy, and among the major players in Europe, since 2019 it is a member of the Possehl Identification Solutions owned by the German group Possehl.

### 2 production plants in Italy:

- Cinisello Balsamo (Mi) - site for labelling and coding solutions
- Soncino (Cr) - site for feeder and pick & place solutions

2 **Research and Development centers**, dedicated to designing, customizing and integrating solutions

MANUFACTURED  
UNITS/YEAR 1233

MACHINES SINCE '78 44.900

CUSTOMERS 31.100

TURNOVER (2020) 13.200 K

PID EMPLOYEES 907

PID TURNOVER (2021) 196.000 K



# MISSION

to design and build **reliable, technologically advanced, and customized solutions** to meet customers' needs. **Transparency, ethics, and attention to people** allow us to create lasting relationships.

# VISION

Building value-for-money solutions that make our technology accessible to many. All our machines are designed according to an industrial vision to guarantee the value of the investment over time

Building relationships with our partners based on **service, assistance, advice, and care**, in a spirit of **genuine partnership**.

Our founding values are those of innovation, **ethics, transparency in activities and behavior, responsibility** in projects alongside our customers, suppliers, and workers.



# GROUP

## A wide network to be closer

The network of **branches and subsidiaries in key markets**, allows us to have a **direct international presence**, ensuring a more accurate and timely service.

### Subsidiaries

- **Etipack BV** , The Netherlands, sales office and technical assistance center for Benelux
- **Bema Germany**, sales office and national technical assistance center
- **Etipack America**, Brazil, production site, technical assistance center for South America
- **Altrapack Hungary**, sales office and national technical assistance center



# MARKETS



## Know-how acquired on the field

We manufacture **technological excellences** that meet the most advanced market sectors requirements through diversification.



# PRODUCTS



## More than 100 solutions for industrial production

- Desktop dispensers
- Automatic labellers
- Printing units
- Labelling Systems
- Pharma labelling systems
- Automatic print and apply
- Feeder and Pick and Place
- Thermal printers
- Consumables
- Spares

Our strength is the combination between a **solid standardized production**, always undergoing research and development, and a **customized one**, designed to meet special needs and develop **solutions likely to have a market.**

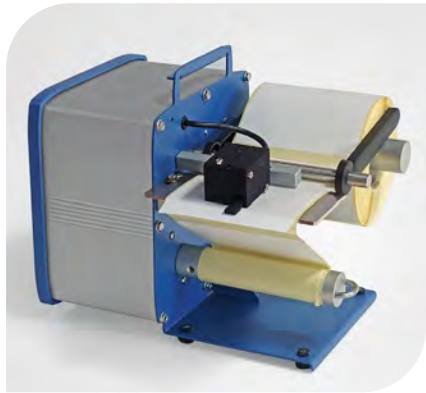


# Desktop label dispensers

Manual or semi-automatic application of self-adhesive labels

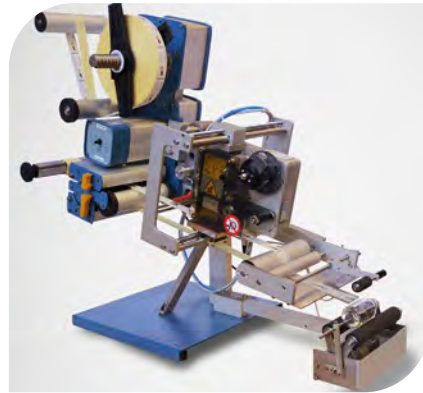


## Handy-X



**Manual** distribution of labels up to **130 mm wide**. Supports **reels up to 180 mm** in diameter.

## Starter



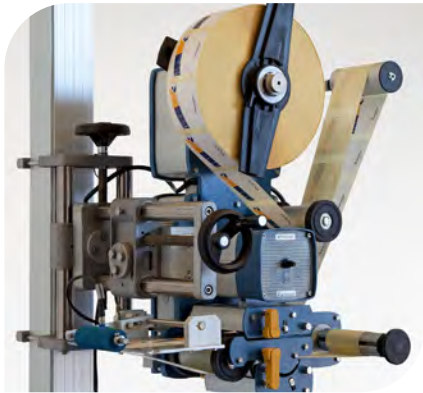
**Semi-automatic** distribution of labels up to **200 mm wide**, it supports **reels up to 280 mm** in diameter. It can also fit different types of **printing units**.

# Automatic labelling machines

Application of pressure-sensitive labels from 100 to 300 mm wide and application speed from 30 to 80 m/min



## Strong



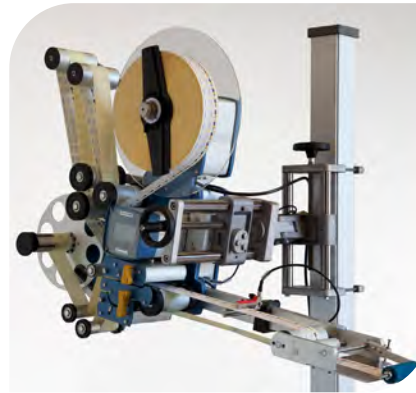
Speed up to **30 meters/minute**,  
Label width up to **100**  
or **200 mm**.

## Energy



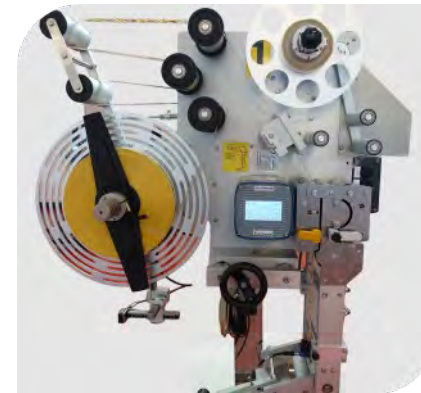
Speed up to **60 meters/minute**,  
Label width up to **100, 200**  
or **300 mm**.

## Extreme



Speed of **80 meters/minute**.  
Label width up to **100, 200**  
or **300 mm**.

## Extreme HS



Speed over **80 meters/minute**.  
Label width up to **100 mm**.

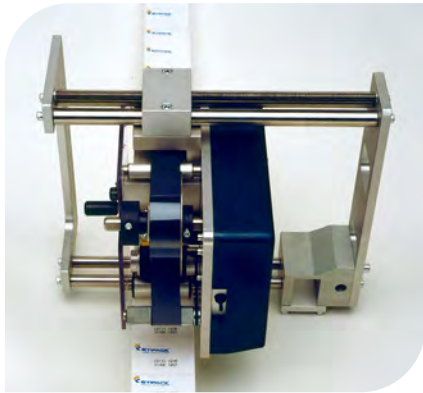


# Hot Stamp Markers

Variable data printing devices, for integration on labelling machines and labelling systems



## Europrint



Hot stamping speed up to **10.000 labels/hour** on printing areas up to **38x20 mm**.

## PEM Novexx



**Thermal transfer** printing available in 4", 5" and 6". **Speeds 50mm-400mm (4"/5")**, **50mm-300mm (6")** on print areas with **width 106mm (4")**, **127mm (5")**, **160mm (6")** at 300 dpi.

## Videojet



**Thermal transfer** printing available in 6230, 6530, 6630 models. Variable **print areas with widths from 32 mm up to 107 mm**. Overprint **speeds from  $\leq 10$  to 600 mm/sec**. up to  $\leq 50$  to 500 mm/sec.

## Smartdate Markem



Thermal Transfer Overprinter available in 2 different models depending on the print area: **with 32 or 53 mm head**. Both printheads feature a **resolution of 12 dots/mm (300 dpi)** and **printing speed  $\leq 70$ -600 mm/s**.

# Wrap-around labeling systems

Application of pressure-sensitive labels on cylindrical products with speed from 50 to 200 pieces/minute



## System 1 Twist



Application with **product rotation on itself** thanks to a **motorized rotation device (DRP)**. Labels with width from 8 x 8 mm to 98 x 250 mm, **distribution speed  $\leq$  3000 pcs/h.**

## System 1 Twist 2 Rolls



Application with **product rotation in a fixed station** thanks to **2 rollers opposed to the DRP**. Labels with width from 8 x 8 mm to 98 x 250 mm, **distributing speed  $\leq$  2000 pcs/h.**

## System 1 Turning



Application with **product rotation** thanks to **two rollers opposing a motorized one**. Labels with width from 8 x 8 mm to 98 x 250 mm, **distributing speed  $\leq$  1500 pcs/h.**

# Top and bottom labelling systems

Pressure-sensitive labels application to the top or top and bottom of containers and flat products



## System 2 Twist



**Upper** application (on top) on **stabilized products**. Labels width 8÷98 mm and length 8÷250 mm. **Production speed** ≤6000 pcs/h.

## System 4 Slim



**Top and bottom** application on **products with reduced thickness**. Labels width x pitch from 60 x 80 mm, to 275 x 350 mm. **Production speed** ≤ 150 pcs/min.

## System 4 Basic



**Top and bottom** application on **cans and deep trays**. Labels width / pitch from 60 x 80 mm, to 275 x 350 mm. **Production speed** ≤ 150 pcs/min.

# Recto/verso labelling systems

Side, recto/verso application of pressure-sensitive labels on elliptical or quadrangular products

## System 5/2 Active



Application of labels  
with width from 30÷198 mm  
and length from 10÷120 mm,  
**distribution speed ≤5000 pcs/h.**

## System 5/2 Modular



Application of labels  
with width from 8÷198 mm  
and length from 8÷250 mm,  
**distribution speed ≤8000 pcs/h.**



# Flat boxes labelling systems

Application of pressure-sensitive labels on the top surface of flat and thin products



## System 9 Light



Label application with width from 8÷98 mm and length from 8÷250 mm, **distribution speed ≤9000 pcs/h.**

## System 9



Label application with width from 8÷98 mm and length from 8÷250 mm, **distribution speed ≤ 24.000 pcs/h.**

# Print & Apply

Real-time printing and label application on boxes, packaging and static or moving products

## Stick Evo



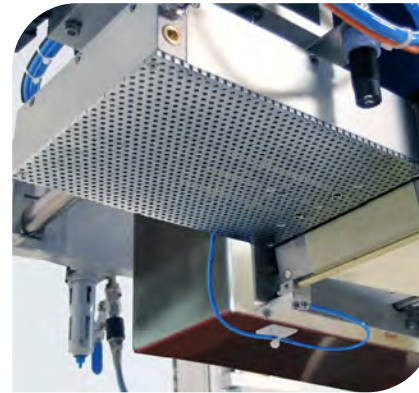
**Contactless** application on **moving products**. Available in 4". Print speed 250 mm/s, **label width up to 120 mm.**

## Corner Evo



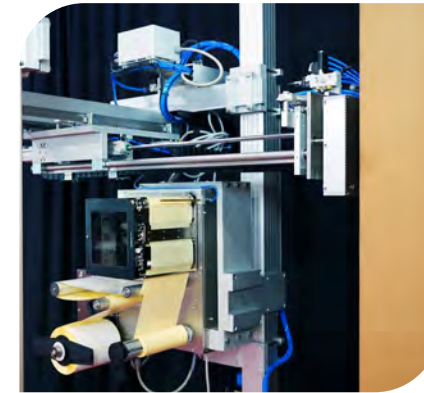
Application **on the corner of moving products**. Available in 4" and 6". Printing speed 250 mm/s, **label width up to 170 mm.**

## Intouch Evo



Application on **static products with smart applicator pad**. Available in 4" and 6". Printing speed 250 mm/s, **label width up to 160 mm.**

## Eurojumbo Evo



Application on static pallets of **2 ISO A5 labels** on two contingent faces, front and side. Printing speed 200 mm/s, **label width 150 x 210 mm.**



# Thermal and thermal transfer printers

Devices for pressure-sensitive labels for high-quality printing of barcodes and codes, variable text, and images.



## Novexx XLP 51X



Series of direct thermal and thermal transfer printers for medium label volume applications, available in 4 and 6 inch. **Printing speed up to  $\leq 250$  mm/sec.**

## Novexx XLP 60 X



Series of direct thermal and thermal transfer printers for 4" and 5"/6" pressure-sensitive labels. **Printing speed up to 400 mm/sec.**

## Eticard



Industrial thermal transfer printer for single tags, plastic cards, coupons, envelopes, sachets, leaflets, product information cards, blister cards for small spare parts. **Printing speed up to 400 mm/sec.**

# Feeders

High-speed distribution of flat products with a wide range of in-line applications



## Agile



Distribution of products **0,1÷25 mm thick**, and size up to 300 mm. **Distribution speed ≤ 60000 pcs/h.**

## Whizzy SM



Distribution of products **0,2÷3 mm thick** with dimensions from 50x50 mm up to 350x180 mm. Configuration with **horizontal or vertical terminal, in different widths: Whizzy 210, Whizzy 350. Distribution speed up to 80 m/min. Retrofitted Stepper Motor and integrated electronics.**

## Whizzy BR



Distribution of products up to **3 mm thick, or 8 mm thick** with dimensions up to 300 mm. Configuration with **horizontal or vertical terminal in different widths: Whizzy 110, Whizzy 210, Whizzy 350, different distribution speeds from ≤ 170 m/min to ≤ 200 m/min. Brushless motorization.**



# Feeders

High-speed distribution of flat products with a wide range of in-line applications



## Whizzy Cut&Feed



**Feeding, cutting and distribution of sachets** with continuous belt (bandolier-packaging) with thickness 1÷10 mm. In-line insertion of **sachets with 2, 3 or 4 seals or in flowpack**. Product dimensions length 30-180 mm width 30-150 mm. **Distribution speed ≤ 60 m/min**. Also available in **orbital cutting version for high-production**.

## Whizzy Multistacker



**Horizontal feeding and distribution of products 0,15÷6 mm thick with rotary magazine for high-speed lines and load autonomy**. Product size length 50-100 mm width 40-100 mm. **Distribution speed ≤ 100 m/min**.

# Pick & Place

Handling, feeding and distribution of flat and thermoformed products



## Clippy PN



**Products vacuum suction and picking** of from adjustable loading magazine and horizontal distribution. Variable products thickness, dimension length and width 50-200 mm. **Distribution speed  $\leq 50$  pcs/min. Pneumatic** motorization.

## Clippy BR



**Products vacuum suction and picking** of from adjustable loading magazine and horizontal distribution. Variable products thickness, dimension length and width 50-200 mm. **Distribution speed  $\leq 120$  pz/min. Brushless** motorization.

## Clippy Denester Clippy Rotary



**Trays and lids de-stacking** from a horizontal loading and distribution warehouse. Product thickness 10÷35 mm, size length and width 100-200 mm. **Distribution speed  $\leq 100$  pcs/min. Brushless** Motorization.

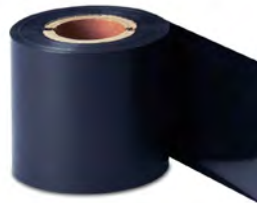


**Products vacuum suction and picking** from loading warehouse and **continuous distribution with extremely high-speed rotary movement.** Product thickness 0.1÷1.5 mm, size length and width from 50-120 mm to 50-150 mm. **Distribution speed  $\leq 400$  pcs/min. Brushless** motorization.

# Printer Consumables

Hot Foils and TTR Ribbons compatible with all hot print markers, thermal transfer coders, inkjet coders

- Hot Printing Foil
- TTR Ribbon Resin
- TTR Ribbon Resin Near Edge
- TTR Ribbon Wax
- TTR Ribbon Enhanced Wax
- TTR Ribbon Wax Resin
- TTR Wax Resin Near Edge





## Labelling, Track & Trace

- Product line devoted to pharmaceutical market providing solutions covering various **labelling and coding** needs: **ampoules, vials, boxes, syringes, single-dose, inhalers, blow fill seal, inserting and checking of information notices**
- Machines meeting specific requirements of quality, safety, productivity, accessibility as per pharmaceutical standards
- Solutions for **labelling, Tracking & Tracing, serialization** complying with most recent European and non-European **regulations**





## Systems and applications

### Vials and ampoules



**Sistema 1 Pharma**  
Wrap-around  
Labelling



**Pharma Round**  
Wrap-around  
Labelling

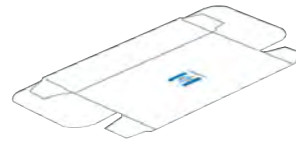


**Etifiale Pro**  
Wrap-around  
Labelling



**Pharma Flexi**  
Wrap-around  
Labelling

### Formed and flat cartons



**Sistema 9 Pharma**  
Track & Trace,  
Top-Labelling



**Pharma Trace Seal**  
Track & Trace  
Tamper-evident,  
Top-Labelling



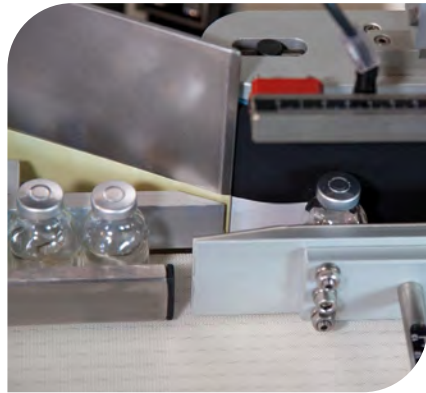
**Pharma Seal**  
Tamper-evident

# Pharmaceutical labelling systems

Vials and ampoules wrap-around labelling



## System 1 Pharma



**Wrap-around labelling on vials.** Products with diameter 18÷80 mm and height 45÷200 mm. **Production speed ≤ 24.000 pcs/h.**

## Pharma Round



**Wrap-around labelling on vials.** Designed according to **GMP guidelines.** Products with diameter 18÷80 mm and height 45÷180 mm. **Production speed ≤ 24.000 pcs/h.**

## Etifiale Pro



**Wrap-around labelling on ampoules.** Products with diameter 10÷22 mm and height 25÷90 mm. **Production speed up to a ≤12.000 pcs/h.**

## Pharma Flexi



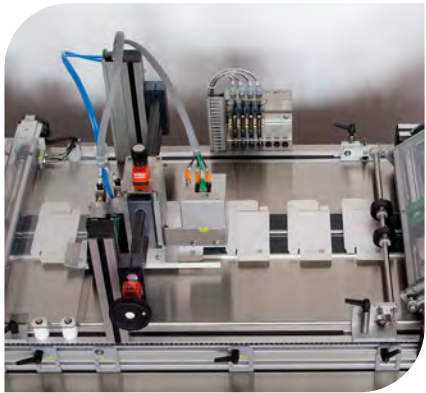
Innovative and versatile machine capable of **handling vials, bottles, carpules and syringes** thanks to a modular system and new technologies. The machine stands out for its excellent performance and the ability to **label up to 400 pieces per minute.** For all products, except for carpules

# Pharmaceutical labelling systems

Flat and formed boxes labelling



## System 9 Pharma



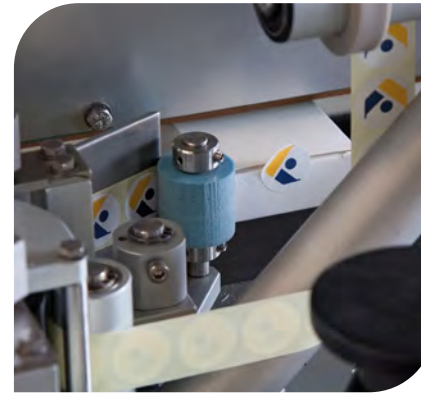
**Labeling, direct printing and serialization of flat/thin boxes.** Product dimensions length 60÷400 mm, width 50÷350 mm, thickness 0,5÷5 mm. **Distribution speed ≤ 400 pcs/min.**

## Pharma Seal



**Tamper-evident application of anti-counterfeiting seal labels on the flaps of pharmaceutical boxes.** Product dimensions: length 35÷100 mm, width 65÷180 mm, thickness 15÷80 mm. **Distribution speed up to 300 pcs/min.**

## Pharma Trace Seal



Application of **2 closing seal label on the flaps** of pharmaceutical boxes. Product size length 35÷120 mm, width , 65÷220 mm, thickness 15÷80 mm. **Distribution speed up to ≤ 18.000 pz/h.**



Via Aquileia, 55/61 20092  
Cinisello Balsamo (MI) Italia



+ 39 02 660621  
etimail@etipack.it  
[www.etipack.it/en](http://www.etipack.it/en)



**Member of Possehl Identification Solutions**  
[www.possehl-identification.com](http://www.possehl-identification.com)