



TECHNEWS

TOP AND BOTTOM LABELLING OF BFS STRIPS



Automatic labelling system to apply multiple pressure-sensitive labels on the top and bottom side of multi-dose Blow Fill Seal strips in the same cycle



THE CLIENT

Global pharmaceutical company, founded in India, producing a diverse portfolio of high-quality affordable medicines covering a variety of therapies for patients.

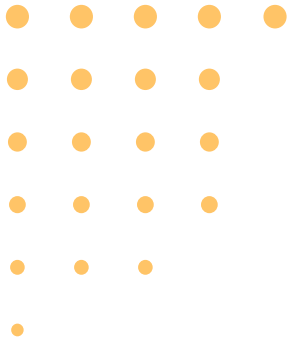


THE CHALLENGE

Application of top and bottom labels on both body and flap of Blow Fill Seal products in strips

The customer was looking for the right solution to efficiently label multidose Blow Fill Seal packages while covering multiple needs. The desired system, in fact, had to apply with precision 5 labels in the upper and lower part of the products; it was required to enable the labeling of both the flaps and the body of the products, as well as simplifying the operator's activities.





[WATCH VIDEO](#)

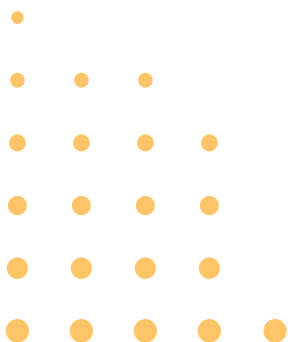
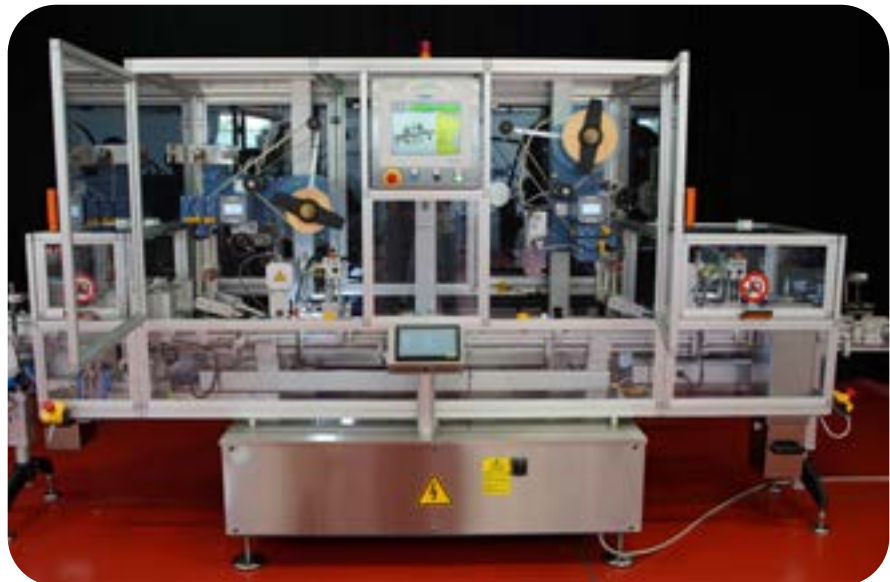


Production speed

THE SOLUTION

System 2 customized to apply 5 top/bottom labels on BFS strip, one label per dose-both on the body and on the flap with two labelers in sequence on top of the strip.

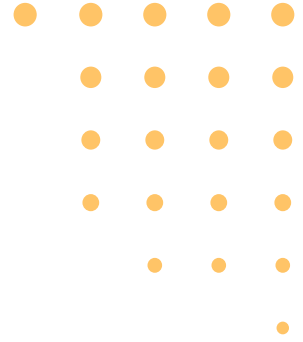
The System 2 series comprises a range of labelling systems designed for application to the top of products. To meet the requirements of the project, Etipack designed a customized System 2 to perform a top-to-bottom application of a label for each BFS dose,-both on the body and the flap,- with two labeling stations in sequence on the top of the conveyor belt, as well as to check the presence of the labels. The System can apply labels on both sides of the product without the need to place a second labeling station under the conveyor belt. The solution, indeed, incorporates a custom-made device specifically designed to place the product so that it can reach a second labelling station, also located above the belt, which applies the labels on the top side. The designed system is also practical for the operator as it provides greater ease of configuration, facilitates format changes, as well as maintenance and service activities.





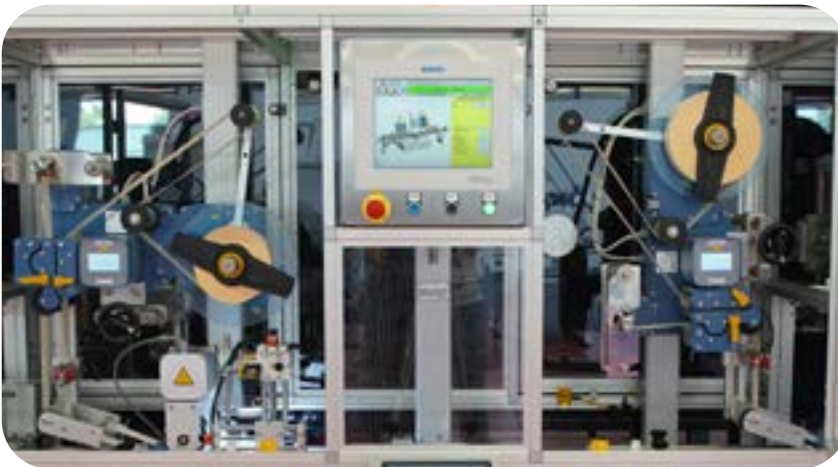
REJECTION SYSTEM FOR INCORRECTLY POSITIONED PRODUCTS

In order to process products from the customer's line correctly, the system is equipped with a rejection system that ejects any overlapping products at the infeed. It also features minimum and maximum loading control devices at the inlet.



CUSTOMIZED CONVEYOR SYSTEM

To adequately space the incoming products, the system is equipped with a device with motorized belts that can lift each individual strip and place it on a customized conveyor belt with spacers that accommodate the products while holding them in place.



ENERGY 100 LABELLERS

2 Automatic labelling machines ENERGY 100, placed subsequently along the main conveyor belt, apply the labels first on the top side of the strips, and on the bottom side with dispensing speed up to 60 m/min. They are equipped with a touch screen display for the setting of more than 50 parameters.

Different customized settings can also be saved for each label format. To support reels up to 280 mm in diameter, they feature double rollers drive units, ideal for labels with backing widths up to 100 mm. They include a swinging arm to keep the labels stripe tension constant, and an internal capacitive sensor to detect the end of the reel.



SPECIAL SYSTEM FOR PRODUCT FLIPPING

The system is customized with a special device designed to twist the product around its axis to apply the labels on the underside.

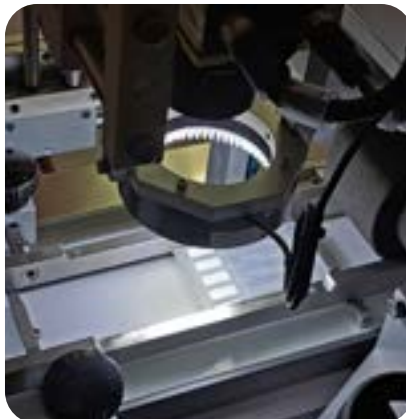


PLASTIC MEDIA REWINDER

The rewinder is designed to facilitate the removal of transparent silicone backing paper by releasing the tension thanks to a clutch and plates. It can wind empty liners up to 170 mm in diameter.

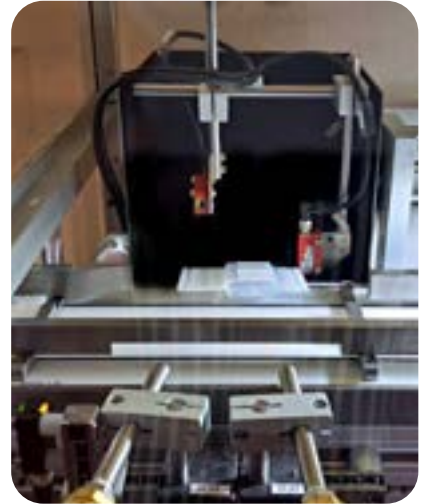
LABELLING CONTROL

To check labels application on both sides of the products, the System is provided by two cameras with circular illuminator and 9" touch panel with customized support. They check every product one-by-one to assure that all of them have the 5 labels properly applied where provided.



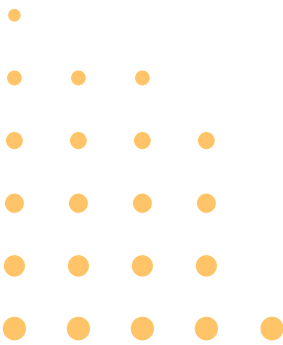
PRODUCT CHECK AND DISCARD

Non conforming products are discarded thanks to a couple of air ejecting devices and collected into a lockable container complete with maximum load control device, and rejecting control. The product quality control is then enhanced thanks to a photocell, placed after the labelling station, detecting "good products". The systems also features a maximum loading control device at exit and failsafe photocellules.



CONTROL PANEL WITH SPECIFIC PHARMA FEATURES

Equipped with advanced electronics with PLC for constant peripheral diagnosis, it integrates an ASEM Panel PC with operator interface based on SCADA technology in Windows 10 environment and SQL Express Database. It enables remote system management and remote assistance on panel PC and PLC. The control panel allows management of FailSafe, back-up/ restore and disaster recovery functions, as well as collection of production batch, CFR21/Audi trail/ Alarm and production data reporting.



ABOUT ETIPACK

Etipack SpA designs, manufactures and sells industrial systems for labelling and coding with self-adhesive labels, feeders and pick and place machines for product distribution and handling. Since 1978 a leading company in its sector in Italy, and one of the largest in Europe, Etipack is today an international group consisting of subsidiaries and affiliates.

 etipack.it

 marketing@etipack.it